



Omega VF replacement units is an ideal replacement and upgrade for the old Singer/McQuay VF unit. The chassis is a direct-drop in for a fast, simple and easy installation.

The Omega replacement chassis features modern components and advanced microprocessor control providing the user with silent, energy efficient, and reliable year-round operation.

A matching harness connector, and factory tested and fully charged with R-410A, makes Omega the preferred replacement option.

STANDARD FEATURES

- Factory charged and tested
- High efficiency compressors
- Advanced microprocessor controller
- 3-Speed fan control on all models
- Unit mounted power disconnect switch
- High and Low-Pressure safety switches
- Freeze Protection sensor
- Entering & Leaving Water Temperature sensors
- Chassis drain pan Condensate Overflow Switch
- Thermal Expansion Valve (TXV) & Filter Drier
- R-410A Environmentally friendly refrigerant
- Stainless Steel Drain Pan
- Refrigerant service access ports

QUICK & EASY

Omega VF chassis is dimensionally identical to old Singer/McQuay VF unit for a quick and easy installation. Simply remove old chassis and slide in new Omega unit. Unit connects directly with existing control box wiring. Water connections match existing cabinet connections for a complete turn-key installation.

SAFETY

Replacement chassis comes with a host of safety features to protect unit from unwanted operating conditions: high-pressure and low-pressure safety switches, water temperature sensing for pre-emptive detection of water flow issues, and condensate overflow switch to protect against water leaks into occupant suite.

COMFORT & RELIABILITY

Quiet and reliable operation from the use of quality components and construction. High-efficiency compressor ensures silent and reliable unit operation. Advanced microprocessor controller continuously monitors operation of the unit for fault-free start-ups and optimal operation. All new Omega units comes with our standard 1 year parts and 5 year compressor warranty.

- Heavy gauge galvanized sheet metal
- 1 Year Parts and 5 Year Compressor Warranty

OPTIONS & ACCESSORIES

- Remote mounted thermostat
- Auto-Flow Balancing valve
- Auto Shut-Off Control valve
- Geothermal Option
- Coated Air Coil for Formicary Corrosion Protection
- Air Filters
- Return Air Panel to match original Singer/McQuay panel

Check www.omega-heatpump.com for latest information.

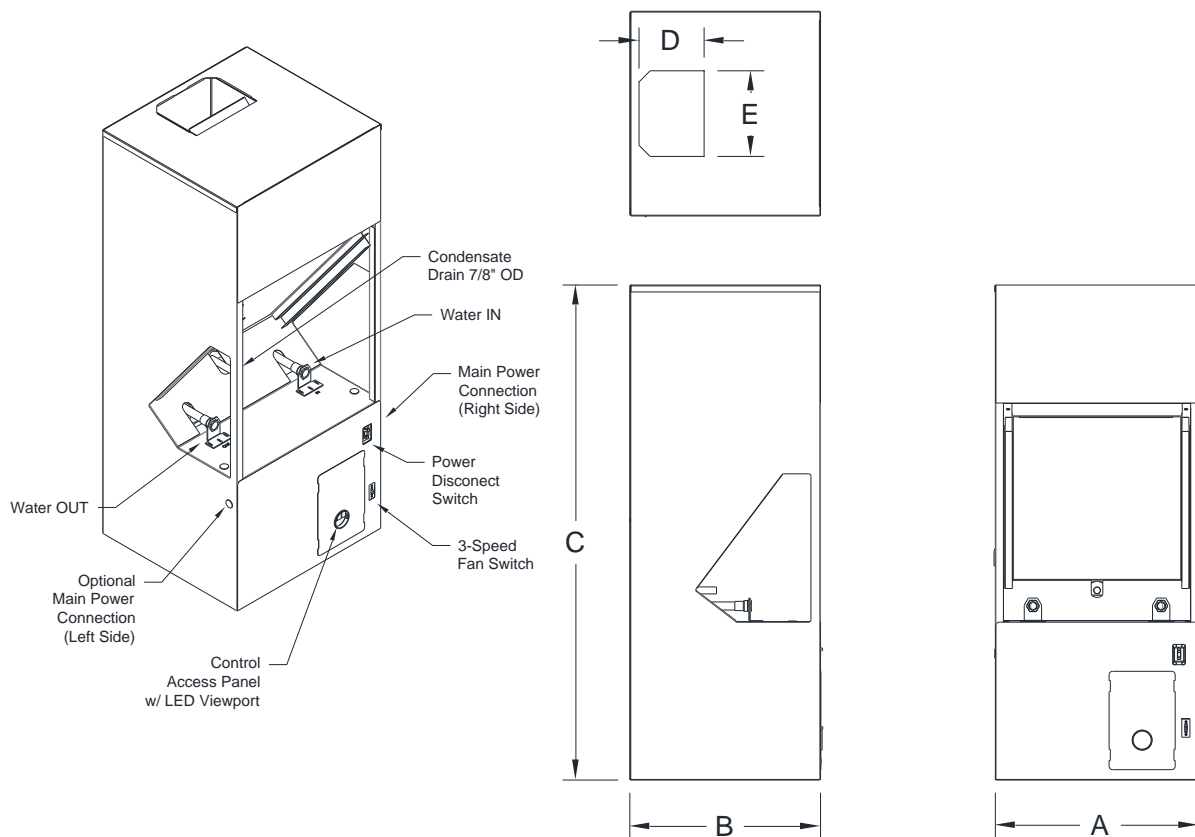
Performance Data

Omega Model	Refrig.	Size (Tons)	CFM	Cooling*		Heating*		GPM	Water Pressure Drop	
				BTUH ¹	EER ¹	BTUH ²	COP ²		PSI	FT
RPC-MC-VF-030	R-410	3/4	350	9400	12.5	11300	4.3	2.5	4.8	11
RPC-MC-VF-040	R-410	1	420	11500	12.2	13800	4.3	3.0	4.8	11
RPC-MC-VF-060	R-410	1 1/2	600	17000	12.2	21200	4.3	4.5	7.8	18
RPC-MC-VF-070	R-410	1 3/4	700	20200	12.2	25500	4.3	5.0	8.2	19
RPC-MC-VF-080	R-410	2	820	23500	12.3	29800	4.3	6.0	4.4	10
RPC-MC-VF-100	R-410	2 1/2	1020	29300	12.2	37700	4.3	7.0	5.6	13

* Nominal capacity performance based on 86F EWT Cooling, 68F EWT Heating and rated CFM. Includes fan power 0.365W/CFM

¹ Cooling performance based on 80F DB and 67F WB entering air conditions.

² Heating performance at 68F entering air.



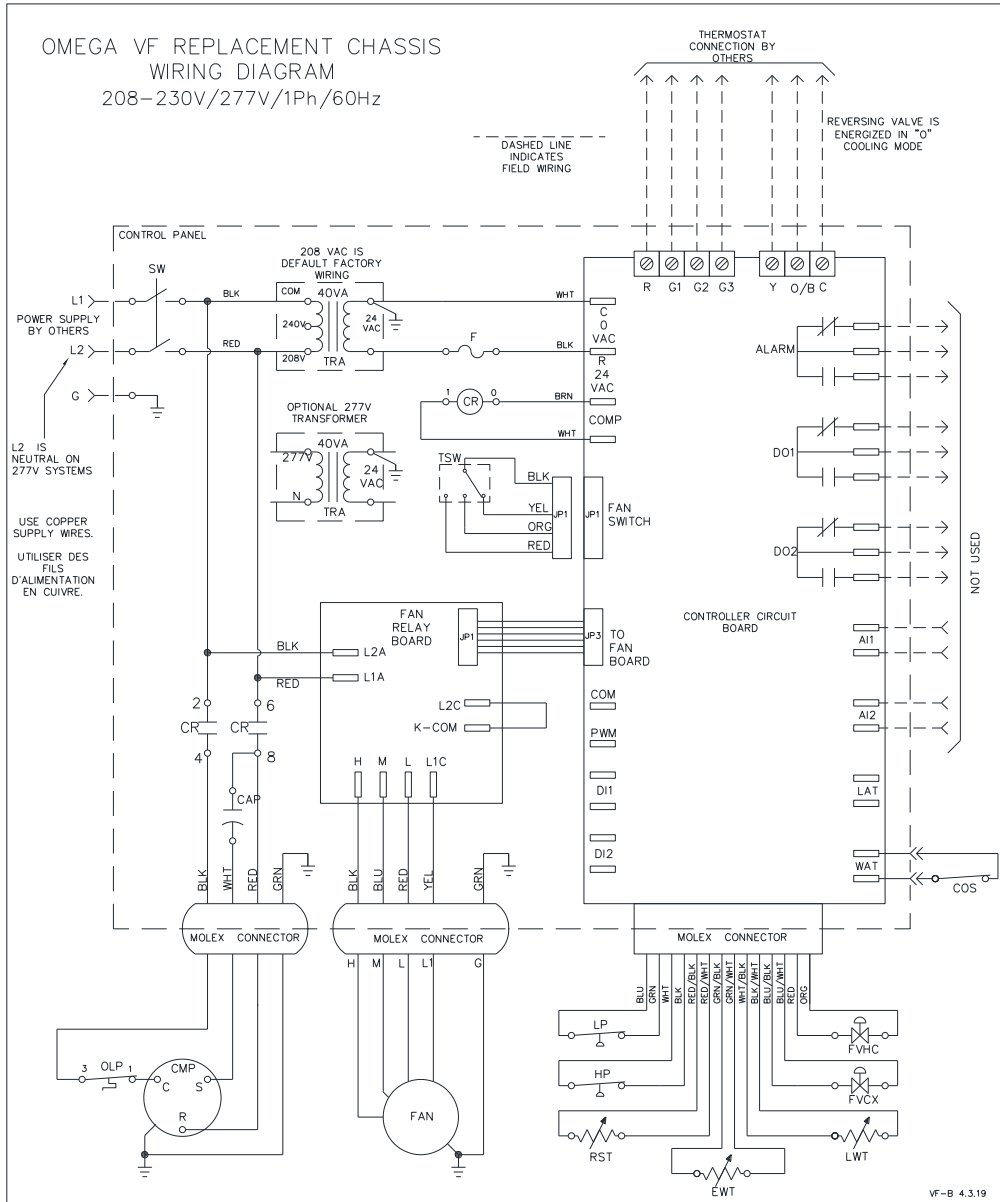
Dimension Data

Omega Model	Frame Size	Dimensions (inches)					Water Connection (in)		Chassis Weight (lbs.)
		A	B	C	D	E	Inlet	Outlet	
RPC-MC-VF-030	Small	18 1/8	15	46 1/2	7	8 1/4	1/2 FPT	1/2 FPT	135
RPC-MC-VF-040	Small	18 1/8	15	46 1/2	7	8 1/4	1/2 FPT	1/2 FPT	140
RPC-MC-VF-060	Small	18 1/8	15	46 1/2	7	8 1/4	1/2 FPT	1/2 FPT	160
RPC-MC-VF-070	Small	18 1/8	15	46 1/2	7	8 1/4	1/2 FPT	1/2 FPT	180
RPC-MC-VF-080	Large	22	20 5/8	53 1/2	7	12	3/4 FPT	3/4 FPT	205
RPC-MC-VF-100	Large	22	20 5/8	53 1/2	7	12	3/4 FPT	3/4 FPT	205

Due to a continuous product improvement policy, dimensions and performance data are subject to change without notice.

Check www.omega-heatpump.com for latest information.

Wiring Schematic



CMP	- Compressor
COS	- Condensate Overflow Switch
CR	- Contactor Relay
EWT	- Entering Water Temp. Sensor
LWT	- Leaving Water Temp. Sensor
F	- Fuse
FVCX	- Auto Shut-Off Valve
FVHC	- Reversing Valve
HP	- High Pressure Switch
LP	- Low Pressure Switch
L1	- Power Line 1
L2	- Power Line 2
OLP	- Thermal Overload Switch
SW	- Power Disconnect
RST	- Refrigerant Suction Temp. Sensor
TB	- Terminal Block
TRA	- Transformer
TSW	- Three Speed Fan Switch

Electrical Data

Omega Model	Compressor Type	Voltage	Compressor		Fan Motor (PSC)		Total Unit FLA	Max Fuse/Circuit Breaker
			RLA	LRA	HP	FLA		
RPC-MC-VF-030	Rotary	208-230/1/60	3.7	22.0	1/10	0.7	4.4	15
RPC-MC-VF-040	Rotary	208-230/1/60	4.7	25.0	1/10	0.7	5.4	15
RPC-MC-VF-060	Rotary	208-230/1/60	7.4	33.0	1/4	2.0	9.4	15
RPC-MC-VF-070	Rotary	208-230/1/60	8.3	44.0	1/4	2.0	10.3	20
RPC-MC-VF-080	Scroll	208-230/1/60	9.5	43.0	1/3	2.8	12.3	20
RPC-MC-VF-100	Scroll	208-230/1/60	13.5	72.5	1/3	2.8	16.3	30

VERIFY EXISTING ELECTRICAL SERVICE IS ADEQUATE FOR NEW REPLACEMENT CHASSIS

Due to a continuous product improvement policy, dimensions and performance data are subject to change without notice.
 Check www.omega-heatpump.com for latest information.